



Stainless steel



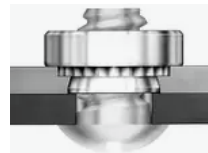
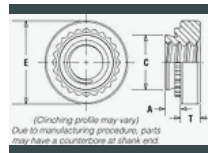
CLS-440-2 PS

Self-Clinching Nuts – Types S, SS, CLS, CLSS, SP

Self-clinching nuts are installed by placing them in properly sized holes in sheets and applying a parallel squeezing force to the head of the nut. The sheet metal surrounding the head cold flows into an undercut thereby making the fastener an integral part of the sheet. A serrated clinching ring prevents the fastener from rotating after installation.

Provide load-bearing threads in thin sheets with high pushout and torque-out resistance.

Type CLA is recommended for use in steel or aluminum sheets HRB (Rockwell "B" scale) 50 or less and HB (Hardness Brinell) 82 or less.



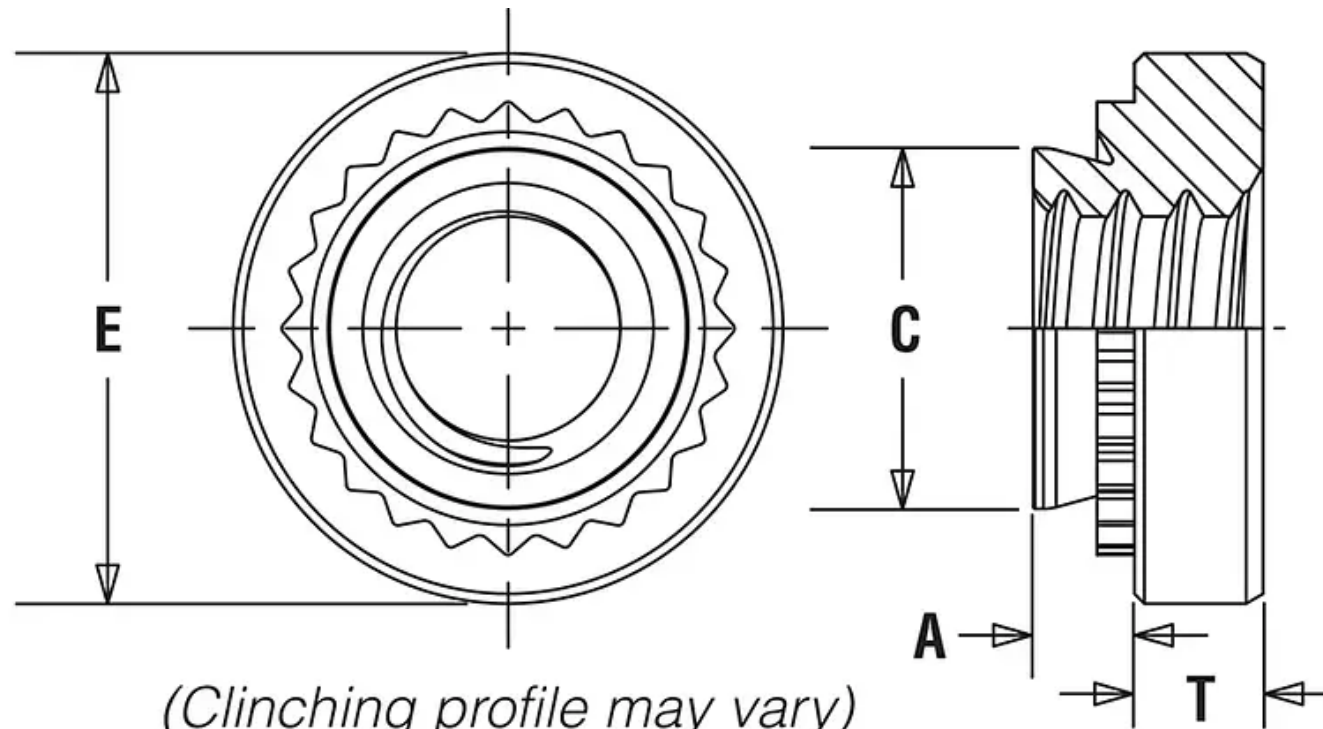
SPECIFICATIONS

THREAD CODE	440
THREAD SPECIFICATION	2B, ASME B1.1, Internal
SHANK CODE	2
FOR USE IN SHEET HARDNESS	HRB 70 / HB 125 or Less

A SHANK MAX	0.054in
E ± .010_IN	0.25in
HOLE SIZE IN SHEET + .003 - .000_IN	0.166in
MIN. DIST. HOLE C/L TO EDGE_IN	0.19in

PRODUCT CATEGORY	Self-Clinching Nuts – Types S, SS, CLS, CLSS, SP
THREAD TYPE	PEM nuts: Standard
BASE PANEL MATERIAL	Aluminum, Steel
BRAND	PEM
FASTENER CHARACTERISTICS	Threaded Internal
PEM PRODUCT FAMILY	CL
PRODUCT TYPE	Nuts
TECHNOLOGY TYPE	Self-Clinching
UNIT (METRIC/UNIFIED)	Unified

MIN. SHEET THICKNESS_IN	0.056in
C MAX._IN	0.165in
T ± .010_IN	0.07in



*(Clinching profile may vary)
Due to manufacturing procedure, parts
may have a counterbore at shank end.*